



BESTOBELLSTEAM

3170 Wasson Road • Cincinnati, OH 45209 USA
Phone 513-533-5600 • Fax 513-871-0105
steam@richardsind.com • www.bestobellsteamtraps.com

Integral Blowdown Valve

Installation & Maintenance Instructions for Bestobell Steam Integral Blowdown Valve

Warning: Bestobell Steam products must only be used, installed and repaired in accordance with these Installation & Maintenance Instructions. Observe all applicable public and company codes and regulations. In the event of leakage or other malfunction, call a qualified service person; continued operation may cause system failure or a general hazard. Prior to servicing equipment, disconnect, shut off, drain and/or bypass all pressurized fluids.

Read Instructions

Bestobell Steam Traps offers the integral blowdown valve to replace the standard strainer cap on its Delta Element steam traps. The integral blowdown valve is a complete assembly which allows the customer, with a 3/8" open-ended or adjustable wrench, to turn the valve stem to open the valve for blowdown.

Pre-Installation

Prior to installation:

- Blowout piping to remove any scale or dirt.
- Verify that the system pressure has been turned off and the Bestobell steam trap has cooled to the touch.

Installation & Operation

1. Remove the strainer cap from the trap body, using a wrench size as listed in the **Torque Value Table**.
2. Remove the gasket and clean the gasket sealing surface.
3. Remove the strainer from the cap, clean and inspect for damage and replace if required.
4. Install new gasket on blowdown cap and thread into trap body. Apply anti-seize compound on the cap threads. Torque cap (and bonnet) using values as listed in the **Torque Value Table**.
5. Before pressurizing trap, check closure of blowdown valve by turning stem clockwise with 3/8" open-ended or adjustable wrench until tight against seat.

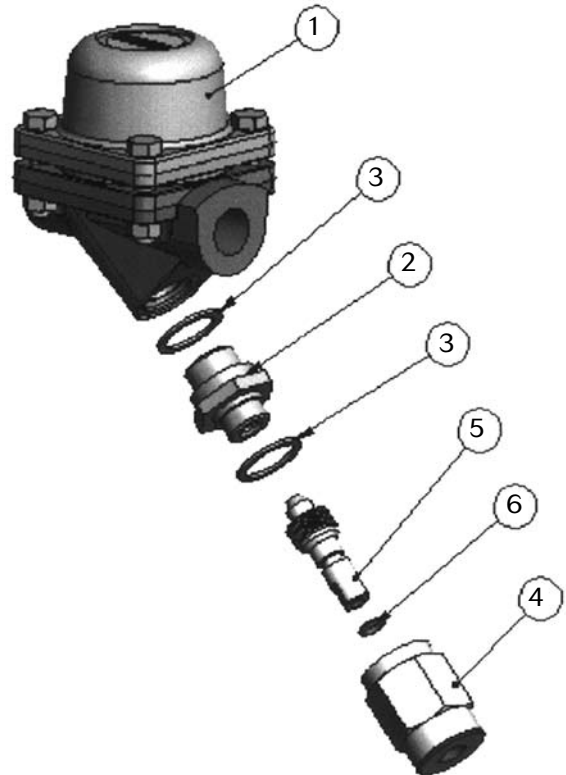
WARNING: When blowdown valve is opened, hot water and steam will exit from the hole in the center of stem.

Maintenance

If stem leaks around the outside of stem when it is set tightly against seat, the stem o-ring seal should be replaced. With system pressure off and/or trap isolated:

1. Remove the blowdown bonnet from the cap, leaving the cap sealed in the body.
2. Remove the stem from the blowdown bonnet and replace the o-ring.
3. Thread stem into bonnet as far as possible to insure clearance when bonnet is threaded on blowdown cap.

4. Replace casket if damaged and thread blowdown bonnet onto blowdown cap. Apply a light anti-seize to the cap and stem threads. Tighten bonnet to the torque as listed in Torque Valve Table.
5. Tighten stem against seat using 3/8" open-ended or adjustable wrench before pressurizing trap or opening bypass valves.



Item	Part Name	Material	Quantity
1	Bestobell trap		1
2	Blowdown Cap	Stainless Steel	1
3	Gasket	Graphoil	2
4	Blowdown Bonnet	Stainless Steel	1
5	Blowdown Stem	Stainless Steel	1
6	O-Ring	EPDM	1

Torque Value Table

Model	Sizes	Wrench Size (in)	Torque (ft-lb)	RBD No.
3A, 6A, 10, 22, GM3/6/10, DM25	3/8" to 3/4"	1-3/16" or 1-1/4"	50	RDB-01
16/25/40, GM16/25, DM40	1/2", 3/4"	1-3/8"	70	RDB-4
16/25/40, GM3/6/10	1"	1-1/2"	90	RDB-2
16/25 GM3/6/10	1-1/4" to 2"	2"	170+	RDB-3
GM3/6	2"	2"	170+	RDB-3
GM3/6	1/2" to 1"	7/8" SQ	170+	RDB-3
DM64/100	1-1/2" to 2"	1-7/16"	70	RDB-5
40/64/100	Blowdown bonnet	2"	170+	RDB-3
All		1-1/4"	50	All

