

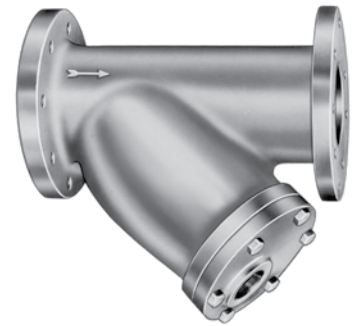
Steam Auxiliary Products

Model Y-Type Strainers

Y-TYPE STRAINERS WITH THREADED OR FLANGED ENDS

Y-type line strainers protect your steam system against the damage to valves, traps and other equipment from foreign matter such as dirt, scale or welding particles in the pipeline. Available with threaded or flanged end connections in carbon steel, stainless steel, bronze, or cast iron for services up to 1480 psi (102 bar).

Strainers feature a machine-tapered seat for a perfect fit of the removable strainer screen; and a blow-off plug with an optional ball valve which can be added to for in-line blowdown of dirt, scale, etc.



ORDERING SCHEMATIC

MODEL	1	2	3	4	5
Y	250	CI	2	1	0

MODEL	
Y	Y Type Strainer

1	PRESSURE RATING
125	ANSI 125#: CI, BR
150	ANSI 150#: BR, CS, SS
250	ANSI 250#: CI, BR
300	ANSI 300#: CS, SS
600	ANSI 600#: CS, SS

2	BODY MATERIAL
CI	Cast Iron
BR	Bronze
CS	Carbon Steel
SS	Stainless Steel

3	SIZE		
2	1/2"	9	3"
3	3/4"	B	4"
4	1"	C	5"
5	1-1/4"	D	6"
6	1-1/2"	E	8"
7	2"	F	10"
8	2-1/2"		

4	CONNECTIONS
1	NPT
2	SWE (CS/SS only)
J	125# ANSI Flange
3	150# ANSI Flange
K	250# ANSI Flange
4	300# ANSI Flange
5	600# ANSI Flange

5	SCREEN SIZE
0	Standard
Z	Non-Standard



A Division of
Richards Industries
 3170 Wasson Road
 Cincinnati, OH 45209

toll free. 800.543.7311
 local. 513.533.5600
 fax. 513.871.0105

steam@richardsind.com
 www.bestobellsteamtraps.com

STEAM AUXILIARY PRODUCTS

MATERIALS

Body, Cover & Plug:

- Cast Iron: high tensile ASTM A126 Class B
- Bronze: ASTM B62 Bronze
- Carbon Steel: ASTM A216, Grade WCB
- Stainless Steel: ASTM A351, Grade CF8M

Screen: Stainless Steel, Monel optional

SERVICE CONSIDERATIONS

- For maximum protection, collected material must be discharged through the blow-off connection on a routine basis.
- A permanent blow-down line and ball valve with each strainer will result in simplified cleaning.
- Installed horizontally or vertically with dirt collecting inside the screen.
- Screen can also be removed and cleaned with solvent and compressed air.
- Inspect the gasket and replace if necessary when replacing the screen.

SCREEN MESH SIZE/OPENINGS

Size	Standard Mesh	Opening
1/2" – 1-1/2"	0.033" perf	0.033"
2" – 3"	0.045" perf.	0.045"
4" – 12"	0.125" perf	0.125"

Note: other mesh sizes available as an option; consult factory for details

OPERATING PRESSURES & TEMPERATURES

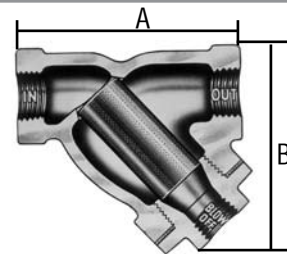
- Threaded End Strainers, PSI @ °F

Type	Size	Steam	WOG
Y125BR	1/2" – 3"	125 @ 406°F	200 @ 150°F
Y250CI	1/2" – 3"	250 @ 460°F	400 @ 150°F
Y600CS	1/2" – 2"	825 @ 800°F	1480 @ 100°F
Y600SS	1/2" – 2"	790 @ 900°F	1440 @ 100°F

- Flanged End Strainers, PSI @ °F

Type	Size	Flange	Steam	WOG
Y125CI	2" – 10"	125	125 @ 400°F	200 @ 150°F
Y250CI	2" – 10"	250	250 @ 450°F	500 @ 150°F
Y150CS	1/2" – 10"	150	200 @ 400°F	285 @ 100°F
Y150SS	1/2" – 10"	150	195 @ 400°F	275 @ 100°F

DIMENSIONS



Size	A (in.)	B (in.)	Blow-off (in.)	Weight (lbs)
Threaded, Y125BR, Bronze				
1/2"	3.25	2.13	0.38	0.50
3/4"	4.00	2.75	0.38	0.75
1"	4.50	3.00	0.50	1.25
1-1/4"	5.38	3.50	0.50	1.75
1-1/2"	6.25	3.88	0.50	2.50
2"	7.50	5.50	0.50	4.00
2-1/2"	9.06	6.00	0.50	6.00
3"	10.25	6.25	0.50	9.00
Threaded, Y250CI, Cast Iron				
1/2"	3.19	2.06	0.25	1.50
3/4"	3.75	2.44	0.38	2.50
1"	4.00	2.44	0.38	3.00
1-1/4"	5.00	3.38	0.75	5.50
1-1/2"	5.75	3.88	0.75	8.00
2"	7.00	4.75	1.00	13.0
2-1/2"	9.25	5.88	1.00	22.0
3"	10.00	6.00	1.00	30.0
Threaded, Y600CS or Y600SS, Carbon or Stainless Steel				
1/2"	2.94	2.25	0.25	2.00
3/4"	3.44	2.56	0.38	3.00
1"	4.56	2.81	0.38	5.00
1-1/4"	4.94	3.06	0.75	7.00
1-1/2"	5.56	3.31	0.75	10.0
2"	6.94	4.81	1.00	15.0
2-1/2"	14.50	9.25	1.00	63.0
3"	15.63	10.25	1.00	77.0
Flanged, Y125CI, Cast Iron				
2"	8.88	6.00	0.50	22.0
2-1/2"	10.75	8.00	1.00	35.0
3"	11.50	8.75	1.00	43.0
4"	13.88	9.50	1.25	75.0
6"	18.50	12.63	1.50	154
8"	21.38	16.38	1.50	243
10"	26.00	19.00	2.00	390
Flanged, Y250CI, Cast Iron				
2"	8.88	6.50	0.50	28.0
2-1/2"	10.75	7.00	1.00	38.0
3"	11.50	8.00	1.00	54.0
4"	13.88	10.75	1.00	110
6"	18.50	16.25	1.50	224
8"	21.38	19.50	1.50	468
10"	26.00	21.25	2.00	590
Flanged, Y150CS or Y150SS, Carbon or Stainless Steel				
1/2"	6.00	3.88	0.25	5.50
3/4"	7.00	4.25	0.38	6.50
1"	7.50	4.75	0.50	9.00
1-1/2"	9.00	5.63	0.50	12.0
2"	8.63	5.25	0.50	20.0
2-1/2"	10.25	7.50	0.75	32.0
3"	11.63	7.69	1.00	36.0
4"	14.38	9.13	1.50	61.0
6"	18.63	13.00	2.00	160
8"	24.38	15.32	2.00	210
10"	26.00	19.13	2.00	440